



TERRA® 

FALL 2025
US

TABLE OF CONTENTS

04 6" SAFETY BOOTS

16 8" SAFETY BOOTS

22 PULL-ON SAFETY BOOTS

24 MET GUARDS

30 ATHLETICS & CASUALS

32 COLD CLIMATE COLLECTION

34 STYLES AT A GLANCE

40 TECHNOLOGIES

TERRA KNOWS. HERE'S PROOF.™

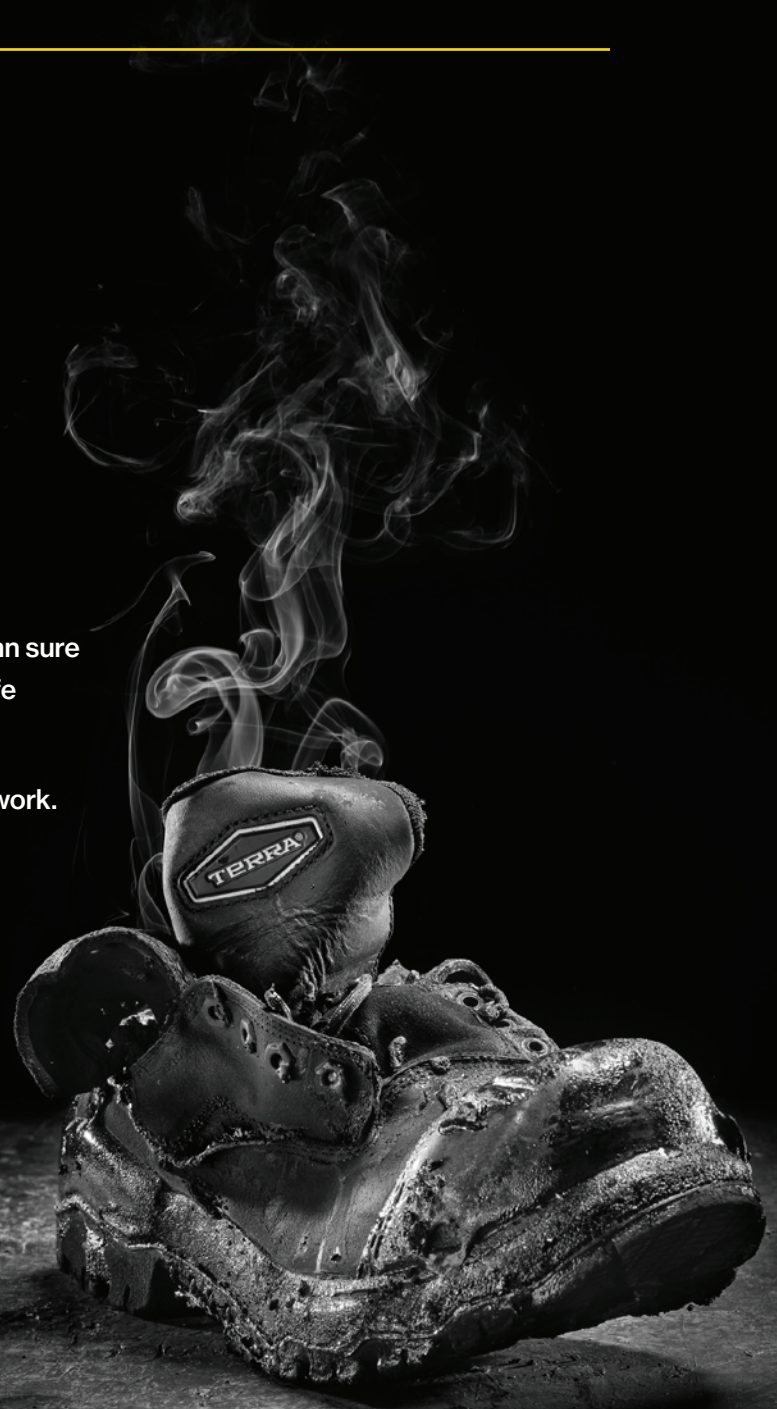
At Terra, we know that in the specialized trades,
the job site exists only in extremes.

That's why we test even more extreme.

Pushing our boots to the absolute limit, to make damn sure
that every sole, lace and tread, will help keep you safe
no matter what job site you are on.

Because you need to know your boots are going to work.

We test until they don't.



**WE KNOW TOUGH
HAS A LIMIT.
WE ARE PUSHING
PAST IT.**



EXILE 25
8" BROWN
1311DB



EXILE 25
6" BLACK
1009BK

Meet the **Exile 25**, the ultimate safety boot designed for those who push beyond the limits of toughness. Built with direct injection **SOLEFORGE** tooling and an **EXOLOK™** chassis, the **Exile 25** offers unmatched stability and flexibility. Crafted from ISA Works leather, these waterproof boots are highly durable, while also delivering all-day comfort with the **EnduraStride™** comfort insole featuring **Ortholite®**. Because TERRA knows the specialized trades need maximum performance, we made the **Exile 25**.



6" SAFETY BOOTS

Tested performance, enduring comfort, and proven safety combine in Terra® 6" Safety Boots. The lower 6" silhouette offers increased flexibility and range of motion. Terra® uses the same industry leading technologies and materials including genuine leather uppers, Vibram® outsoles, and Thinsulate™ insulation. To improve fit, you'll also find EXOLOK™ support technology, OmniCore™ performance construction, and one of Terra's premium comfort FOOTBED™ insoles.

NEW FOR FALL 2025



6" EXILE 25



WATERPROOF



- Premium full-grain waterproof ISA Works leather
- Waterproof Hydroguard® membrane
- Moisture-wicking lining with **CLEANFEET®** odor-control treatment
- Custom molded TPU pull-ports and raked comfort collar
- Direct-attached **SOLEFORGE** PU midsole with **EXOLOK™** heel chassis
- All-terrain, heat, oil and slip resistant industrial rubber outsole
- Durable PU toe bumper with rubber kick-plate
- **EnduraStride™** comfort **PU FOOTBED™** with Ortholite®
- **CSA Grade 1 composite toe, composite plate, PR & EH**
- **TERRA FIRMA-FLEX™** - 100% Metal Free
- **ASTM F3445-21 Slip-Resistant**

| | | |
|-----------------------------|------------|----------------|
| ■ 1009BK | BLACK | CT / CP / EH |
| ■ 1009DB | DARK BROWN | CT / CP / EH |
| SIZING / 7-12, 13, 14, 15 W | | MSRP: \$209.99 |





TERRA®
SOLEFORGE



DIRECT INJECTED
SOLEFORGE TOOLING



6" EXILE 25
1009DB



6" EXILE 25
1009BK



6" GANTRY
4T8VBK

6" GANTRY



WATERPROOF



- Premium waterproof leather with **waterproof Hydroguard®** membrane
- Padded top collar
- Dual-purpose top hardware for quick lacing
- Moisture-wicking lining with **CLEANFEET®** odor-control treatment
- Abrasion-resistant custom "Workie" **TECTUFF™** vamp and heel
- Molded **TERRA®** TPU toe bumper for increased abrasion resistance
- Rigid external heel counter for improved lateral stability
- **3M™ Scotchlite™** reflective detail for high visibility
- Cemented high rebound PU midsole
- **VIBRAM® FIRE & ICE™** outsole for superior traction and performance in high heat & sub-zero temperatures
- Premium comfort PU + eTPU **JETSTRIDE® FOOTBED™** insole
- **CSA Grade 1 nanocomposite KRYPTOE®** safety toe, composite plate, EH
- **ASTM F3445-21 Slip-Resistant**

■ **4T8VBK**

BLACK

NT / CP / EH

SIZING / 7-12, 13, 14, 15, 16 M/W

MSRP: \$219.99





6" IRONSTONE



- Full-grain, barnyard resistant, waterproof leather upper
- **Waterproof Hydroguard® membrane**
- Moisture-wicking lining with **CLEANFEET®** odor-control treatment
- Molded **TERRA DURA-MOC™** TPU toe bumper for increased abrasion protection
- Durable, PU coated leather external heel strap
- Dual-purpose top hardware for quick lacing
- Cemented, shock absorbing, high rebound EVA midsole
- High-traction, slip and oil resistant, heavy-duty rubber outsole
- Premium single-density **PU FOOTBED™** insole
- **OMNICORE™** construction elevates comfort and performance combining a puncture resistant plate between lightweight shock absorbing EVA and industrial grade, slip resistant rubber
- **CSA Grade 1 composite toe, composite plate, PR & EH**
- **TERRA FIRMA FLEX™** – 100% Metal Free
- **ASTM F3445-21 Slip-Resistant**

| | | |
|-----------------|-------|--------------|
| ■ 839GBK | BLACK | CT / CP / EH |
| ■ 839GDB | BROWN | CT / CP / EH |

SIZING / 7-12, 13, 14, 15 W

MSRP: \$199.99



6" IRONSTONE
839GDB



6" CARBINE
8395BN

6" CARBINE



WATERPROOF



- Premium waterproof leather with **waterproof Hydroguard®** membrane
- Comfort mesh top collar
- Custom dual-purpose top speedhooks for quick lacing
- Moisture-wicking lining with **CLEANFEET®** odor-control treatment
- **TERRA® EXOLOK™** external heel counter for improved lateral stability
- Molded toe bumper for increased abrasion resistance
- Dual-density high rebound EVA **JETBOUND® FOOTBED™** insole
- **TERRA® OMNICORE™** cemented construction elevates performance and protection with a puncture resistant plate between high rebound PU and industrial grade, slip resistant rubber
- **CSA Grade 1 composite safety toe, composite plate, EH**
- **ASTM F3445-21 Slip-Resistant**

■ **8395WT**
■ **8395BN**

WHEAT
BROWN

CT / CP / EH
CT / CP / EH

SIZING / 7-12, 13, 14, 15 M/W

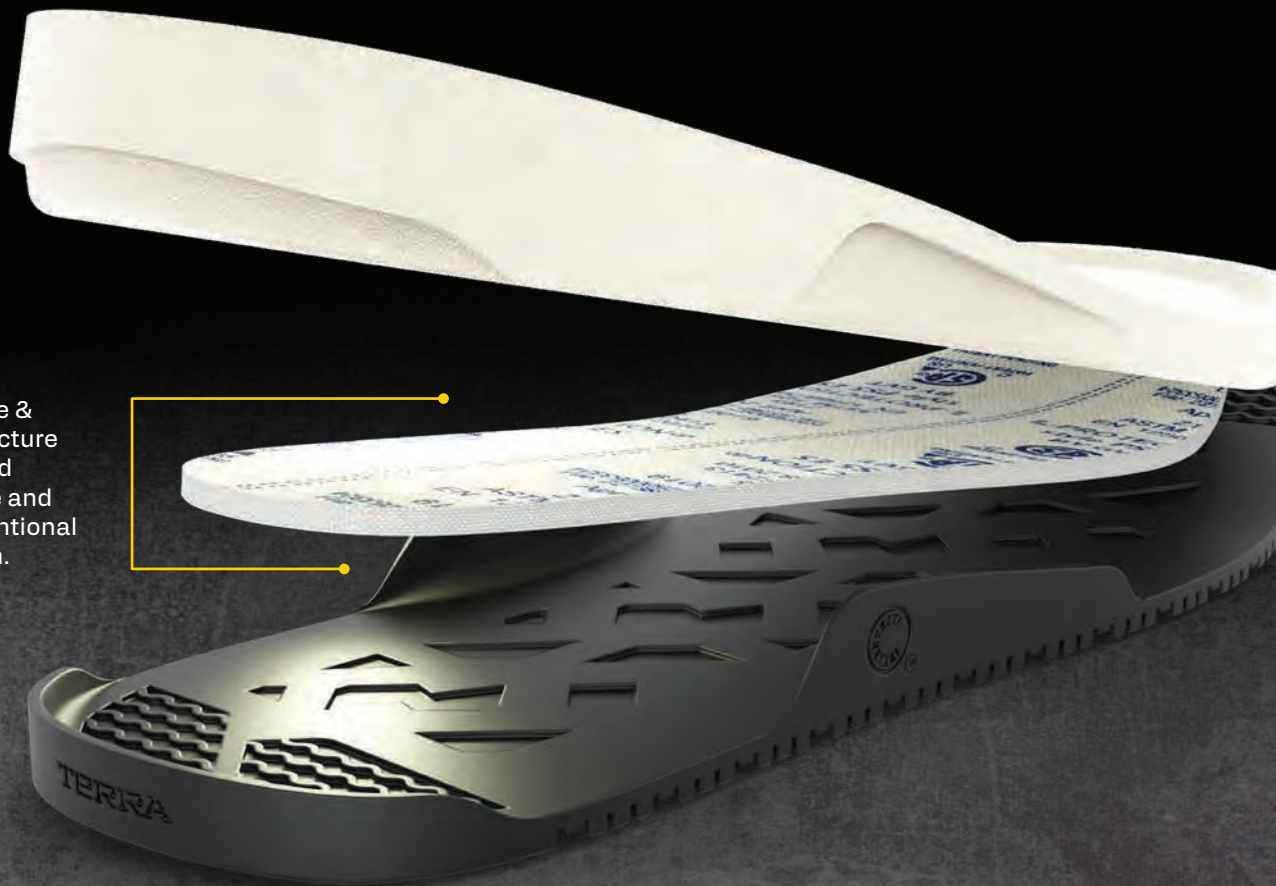
MSRP: \$189.99



ELEVATED PERFORMANCE. INNOVATIVE CONSTRUCTION.



Elevated performance & protection with a puncture resistant plate layered **between** the midsole and outsole, unlike conventional PR plate construction.



Terra's OmniCore™ construction raises the bar on overall safety footwear performance with an innovative approach to the layered placement of key comfort and safety components.

TERRA OMNICORE™ FAMILY



Carbine 8" & 6"

Cobalt 6"

Ironstone 8" & 6"

Eclipse



6" COBALT



- Premium waterproof suede leather upper
- Moisture-wicking Super Spacer lining and **AEROVENT** layering system
- **TERRA® EXOLOK™** external heel counter for improved lateral stability
- Molded TPU toe bumper
- Dual-density high rebound EVA **JETBOUND® FOOTBED™** insole
- **TERRA® OMNICORE™** cemented construction elevates performance and protection with a puncture resistant plate between high rebound PU and industrial grade, slip-resistant rubber
- **CSA Grade 1 composite safety toe, composite plate, EH**
- **TERRA FIRMA FLEX™** – 100% Metal Free
- **ASTM F3445-21 Slip-Resistant**

| | | |
|----------|-------|--------------|
| ■ 1279BK | BLACK | CT / CP / EH |
| ■ 1279TN | TAN | CT / CP / EH |

SIZING / 7-12, 13, 14, 15 W

MSRP: \$179.99



6" BYRNE



WATERPROOF



- Premium waterproof leather and **waterproof membrane** construction
- Raked and padded comfort collar
- Moisture-wicking and abrasion-resistant lining
- **CLEANFEET®** odor-control treatment
- DWR treated 100% Recycled PET quarter insert for added flexibility
- Direct-attached industrial grade PU midsole
- Slip, heat and acid-resistant TPU outsole
- Premium comfort **PU FOOTBED™** insole
- **CSA Grade 1 composite toe, composite plate, EH**
- **TERRA FIRMA FLEX™** – 100% Metal Free
- **ASTM F3445-21 Slip-Resistant**
- Available in smaller sizes

■ **839BBK**
■ **839BDB**

BLACK
DARK BROWN

CT / CP / EH
CT / CP / EH

SIZING / 3-12, 13, 14 W

MSRP: \$179.99



6" BYRNE
839BDB





MURPHY



- Full-grain waterproof leather upper
- Pull-on twin gore construction
- Moisture-wicking and abrasion-resistant lining
- **CLEANFEET®** odor-control treatment
- Direct-injected PU midsole
- Slip, oil and heat resistant TPU outsole
- Premium comfort **PU FOOTBED™** insole
- **CSA Grade 1 composite toe, composite plate, EH**
- **TERRA FIRMA FLEX™** – 100% Metal Free
- **ASTM F3445-21 Slip-Resistant**
- Available in smaller sizes

■ **R4NRBK**

BLACK

CT / CP / EH

■ **R4NRDB**

DARK BROWN

CT / CP / EH

SIZING / 3-12, 13, 14 W

MSRP: \$169.99



MURPHY SOFT TOE



- Full-grain waterproof leather upper
- Pull-on twin gore construction
- Moisture-wicking and abrasion-resistant lining
- **CLEANFEET®** odor-control treatment
- Direct-injected PU midsole
- Slip, oil and heat resistant TPU outsole
- Premium comfort **PU FOOTBED™** insole
- **ASTM F3445-21 Slip-Resistant**
- Available in smaller sizes

■ **R4NSBK**

BLACK

SOFT TOE

SIZING / 3-12, 13, 14 M/W

MSRP: \$159.99

MURPHY
R4NRDB



6" PATTON



- **BLACK:** Premium, PU coated, waterproof leather upper
- **BROWN:** Premium, full grain, lightly pebbled, waterproof leather upper
- Traditional padded top collar
- Moisture-wicking lining with **CLEANFEET®** odor-control treatment
- Molded TPU toe bumper for increased abrasion resistance
- Durable, **TECTUFF™** external heel counter
- Cemented, shock absorbing, high rebound PU midsole
- High-traction, oil, acid & slip resistant, heavy-duty rubber outsole
- Dual-density high rebound EVA **JETBOUND® FOOTBED™** insole
- **CSA Grade 1 aluminum toe, composite plate, EH**
- **ASTM F3445-21 Slip-Resistant**
- Available in smaller sizes

■ **4NS6BK**
■ **4NS6BN**

BLACK
BROWN

AT / CP / EH
AT / CP / EH

SIZING / 3-12, 13, 14, 15 M/W

MSRP: \$159.99



NEW
FOR FALL 2025



NEW
FOR FALL 2025



FINDLAY



WATERPROOF



FINDLAY
R5205B



8" SAFETY BOOTS

Durable, tough, and built for protection, Terra® 8" Safety Boots are designed to not just meet but exceed the demands of the most specialized trades. Tested for optimal performance and armed with features such as Vibram® outsoles, Thinsulate™ insulation, and waterproof Hydroguard® membranes, these work boots deliver advanced safety. For enhanced comfort and a locked in fit, select Terra 8" Safety Boots include EXOLOK™ support technology, OmniCore™ performance construction, and a selection of premium FOOTBED™ insoles.

NEW FOR FALL 2025



8" EXILE 25



WATERPROOF



- Premium full-grain waterproof ISA Works leather
- Waterproof Hydroguard® membrane
- Moisture-wicking lining with **CLEANFEET®** odor-control treatment
- Custom molded TPU pull-ports and raked comfort collar
- Direct-attached **SOLEFORGE** PU midsole with **EXOLOK™** heel chassis
- All-terrain, heat, oil and slip resistant industrial rubber outsole
- Durable PU toe bumper with rubber kick-plate
- **EnduraStride™** comfort **PU FOOTBED™** with Ortholite®
- **CSA Grade 1 composite toe, composite plate, PR & EH**
- **TERRA FIRMA-FLEX™** - 100% Metal Free
- **ASTM F3445-21 Slip-Resistant**

1311DB

DARK BROWN

CT / CP / EH

SIZING / 7-12, 13, 14, 15 W

MSRP: \$229.99



- New **high-rebound** PU compound
- Elevated **recovery** and **cushioning** of PU
- **Lightweight** performance and comfort of EVA



STABILITY LOCKED IN

Terra® EXOLOK™ system maximizes heel lock with a molded TPU form that extends to the eyestay, strategically positioning quadrants to enhance support, flexibility, and comfort.

EXOLOK™
external support technology

FEATURED IN



NEW

Exile 25 (8" & 6")

Carbine (8" & 6")

Cobalt 6"

Vector



8" GANTRY



WATERPROOF



- Premium waterproof leather with **waterproof Hydroguard®** membrane
- Padded top collar
- Dual-purpose top hardware for quick lacing
- Moisture-wicking lining with **CLEANFEET®** odor-control treatment
- Abrasion-resistant custom "Workie" **TECTUFF™** vamp and heel
- Molded **TERRA®** TPU toe bumper for increased abrasion resistance
- Rigid external heel counter for improved lateral stability
- **3M™ Scotchlite™** reflective detail for high visibility
- Cemented high rebound PU midsole
- **VIBRAM® FIRE & ICE™** outsole for superior traction and performance in high heat & sub-zero temperatures
- Premium comfort PU + eTPU **JETSTRIDE® FOOTBED™** insole
- **CSA Grade 1 nanocomposite KRYPTOE®** safety toe, composite plate, EH
- **ASTM F3445-21 Slip-Resistant**

| | | |
|-----------------------------------|-------|----------------|
| ■ 4NRGBK | BLACK | NT / CP / EH |
| SIZING / 7-12, 13, 14, 15, 16 M/W | | MSRP: \$229.99 |



TECTUFF™ PU coated leathers use a proprietary process and chemistry which delivers extreme durability. The polyurethane formula is securely bonded through heat and pressure to the leather substrate. The resulting finish is the most durable in the industry and is impervious to dirt, oil, and stain penetration.

8" IRONSTONE
839FBK



8" IRONSTONE



WATERPROOF



- Full-grain, barnyard resistant, waterproof leather upper
- **Waterproof Hydroguard® membrane**
- Moisture-wicking lining with **CLEANFEET®** odor-control treatment
- Molded **TERRA DURA-MOC™** TPU toe bumper for increased abrasion protection
- Durable, PU coated leather external heel strap
- Dual-purpose top hardware for quick lacing
- Cemented, shock absorbing, high rebound EVA midsole
- High-traction, slip and oil resistant, heavy-duty rubber outsole
- Premium single-density **PU FOOTBED™** insole
- **OMNICORE™** construction elevates comfort and performance combining a puncture resistant plate between lightweight shock absorbing EVA and industrial grade, slip resistant rubber
- **CSA Grade 1 composite toe, composite plate, PR & EH**
- **TERRA FIRMA FLEX™** – 100% Metal Free
- **ASTM F3445-21 Slip-Resistant**

■ 839FBK

BLACK

CT / CP / EH

■ 839FDB

BROWN

CT / CP / EH

SIZING / 7-12, 13, 14, 15 W

MSRP: \$219.99





8" CARBINE
4TCRWT



8" CARBINE



WATERPROOF



- Premium waterproof leather with **waterproof Hydroguard®** membrane
- Comfort mesh top collar
- Custom dual-purpose top speedhooks for quick lacing
- Moisture-wicking lining with **CLEANFEET®** odor-control treatment
- 200g of **Thinsulate™** insulation for added warmth
- **TERRA® EXOLOK™** external heel counter for improved lateral stability
- Molded toe bumper for increased abrasion resistance
- Dual-density high rebound EVA **JETBOUND® FOOTBED™** insole
- **TERRA® OMNICORE™** cemented construction elevates performance and protection with a puncture resistant plate between high rebound PU and industrial grade, slip resistant rubber
- **CSA Grade 1 composite safety toe, composite plate, EH**
- **ASTM F3445-21 Slip-Resistant**

| | | |
|----------|-------|--------------|
| ■ 4TCRBN | BROWN | CT / CP / EH |
| ■ 4TCRWT | WHEAT | CT / CP / EH |

SIZING / 7-12, 13, 14, 15 M/W

MSRP: \$199.99



8" PATTON



- Premium, full grain, lightly pebbled, waterproof leather upper
- Moisture-wicking lining with **CLEANFEET®** odor-control treatment
- Molded TPU toe bumper for increased abrasion resistance
- Durable, **TECTUFF™** external heel counter
- Cemented, shock absorbing, high rebound PU midsole
- High-traction, oil, acid & slip resistant, heavy-duty rubber outsole
- Dual-density high rebound EVA **JETBOUND® FOOTBED™** insole
- **CSA Grade 1 aluminum toe, composite plate, EH**
- **ASTM F3445-21 Slip-Resistant**
- Available in smaller sizes

4NS5BN

BROWN

AT / CP / EH

SIZING / 3-12, 13, 14, 15 M/W

MSRP: \$179.99



COMFORT GETS TO WORK.

The Terra® **JETBOUND®** insole – with high-rebound EVA pressure pods to absorb strike forces and an anatomically contoured design for underfoot support.



- COMFORT
- SUPPORT
- STABILITY

8" PATTON
4NS5BN



PULL-ON SAFETY BOOTS

Step into unparalleled convenience and protection with the Terra® line of Pull-On Safety Boots. Crafted from durable, waterproof leather and equipped with a premium comfort PU FOOTBED™ insole, these safety boots ensure long lasting underfoot support on the jobsite. The lab tested slip resistant TPU outsole provides unparalleled traction and stability, allowing workers to step confidently on challenging terrain. Terra® Pull-On Safety Boots are designed for those who want the ease of lace-free boots and require uncompromising safety.



MURPHY WELLINGTON



- Premium waterproof leather with **waterproof Hydroguard®** membrane
- Moisture-wicking and abrasion-resistant lining
- **CLEANFEET®** odor-control treatment
- Direct-attached industrial grade PU midsole
- Slip and oil resistant TPU outsole
- Premium comfort **PU FOOTBED™** insole
- **CSA Grade 1 composite safety toe, composite plate, EH**
- **TERRA FIRMA FLEX™** – 100% Metal Free
- **ASTM F3445-21 Slip-Resistant**
- Available in smaller sizes

■ **1283DB** DARK BROWN CT / CP / EH
SIZING / 3-12, 13, 14 W MSRP: \$199.99





PATTON WELLINGTON



- **BLACK:** Premium, full grain, waterproof leather upper with **waterproof Hydroguard® membrane**
- **BROWN:** Premium, full grain, lightly pebbled, waterproof leather upper with **waterproof Hydroguard® membrane**
- Cemented, shock absorbing, high rebound PU midsole
- High-traction, oil, acid & slip resistant, heavy-duty rubber outsole
- Dual-density high rebound EVA **JETBOUND® FOOTBED™** insole
- **CSA Grade 1 aluminum toe, composite plate, EH**
- **ASTM F3445-21 Slip-Resistant**
- Available in smaller sizes

| | | |
|-------------------------------|-------|----------------|
| ■ 4TCBBN | BROWN | AT / CP / EH |
| ■ 4TCBBK | BLACK | AT / CP / EH |
| SIZING / 3-12, 13, 14, 15 M/W | | MSRP: \$184.99 |



PATTON WELLINGTON
4TCBBN

MET GUARDS

Focusing on minimal weight and maximum flexibility, full-length met guards give men and women all the safety they need while maintaining agility. Internal met guards offer critical safety from everyday impacts, while our external met guards provide the highest level of safety when dealing with heavy objects and welding sparks.

NEW FOR FALL 2025



8" PATTON EXT-MET



- Premium, oily full grain, waterproof leather upper
- Moisture-wicking lining with **CLEANFEET®** odor-control treatment
- Molded TPU toe bumper for increased abrasion resistance
- Durable, **TECTUFF™** external heel counter
- Molded external TPU MET guard with riveted **TECTUFF™** pocket
- Cemented, shock absorbing, high rebound PU midsole
- High-traction, heat, slip and oil resistant, heavy-duty rubber outsole
- Dual-density high rebound EVA **JETBOUND® FOOTBED™** insole
- **CSA Grade 1 aluminum toe, composite plate, PR & EH**
- **ASTM F3445-21 Slip-Resistant**
- Available in smaller sizes

■ **1314DB** DARK BROWN AT / CP / EH / M
SIZING / 3-12, 13, 14, 15 MSRP: \$219.99



COMFORT GETS TO WORK.

The Terra® JETBOUND™ insole – with high-rebound EVA pressure pods to absorb strike forces and an anatomically contoured design for underfoot support.



EXTERNAL MET GUARDS



6" SENTRY 2020 EXT-MET
839KDB

6" SENTRY 2020 EXT-MET



- Full-grain waterproof leather upper
- Four-row stitched "combat" upper pattern with comfort bellows tongue
- Abrasion-resistant **TECTUFF™** leather back strap and MET guard cover
- Moisture-wicking lining with **CLEANFEET®** odor-control treatment
- Articulated TPU + **XRD®** external MET guard
- All-season, slip-resistant, heavy-duty TPU outsole
- Direct-injected, lightweight and shock-absorbing PU midsole, with PU toe bumper
- Premium comfort **PU FOOTBED™** insole
- **CSA Grade 1 nanocomposite KRYPTOE®** safety toe, composite plate, EH.
- **ASTM F3445-21 Slip-Resistant**

■ **4NRXBK**
■ **4NRXBN**

BLACK
BROWN

NT / CP / EH / M
NT / CP / EH / M

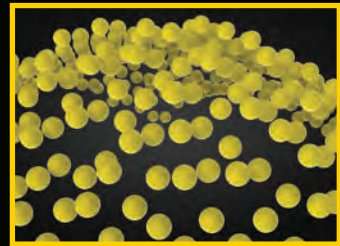
SIZING / 7-12, 13, 14, 15 M/W

MSRP: \$194.99

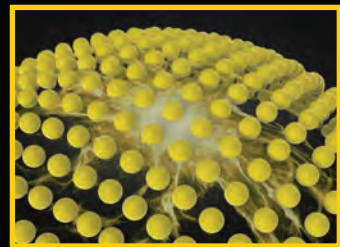




Designed to stay flexible in motion,
but turn into an ultra-dense protective
barrier upon impact.



FLEXIBLE IN MOTION



RIGID ON IMPACT



INTERNAL MET GUARDS

8" GANTRY INT-MET



WATERPROOF



- Premium waterproof leather with **waterproof Hydroguard®** membrane
- Padded top collar
- Moisture-wicking lining with **CLEANFEET®** odor-control treatment
- Molded **TERRA®** TPU toe bumper for increased abrasion resistance
- Rigid external heel counter for improved lateral stability
- **3M™ Scotchlite™** reflective detail for high visibility
- **XRD®** Internal MET guard
- Cemented high rebound PU midsole
- **VIBRAM® FIRE & ICE™** outsole for superior traction and performance in high heat & sub-zero temperatures
- Premium comfort PU + eTPU **JETSTRIDE® FOOTBED™** insole
- **CSA Grade 1 nanocomposite KRYPTOE®** safety toe, composite plate, EH
- **ASTM F3445-21 Slip-Resistant**

■ **839CBK** BLACK NT / CP / EH / M
SIZING / 7-12, 13, 14, 15, 16 MSRP: \$249.99



8" GANTRY INT-MET
839CBK



8" PATTON INT-MET
839KDB



8" PATTON INT-MET



- Premium, oily full grain, waterproof leather upper
- Moisture-wicking lining with **CLEANFEET®** odor-control treatment
- Molded TPU toe bumper for increased abrasion resistance
- Durable, **TECTUFF™** external heel counter
- **XRD®** Internal MET guard
- Cemented, shock absorbing, high rebound PU midsole
- High-traction, slip and oil resistant, heavy-duty rubber outsole
- Dual-density high rebound EVA **JETBOUND® FOOTBED™** insole
- **CSA Grade 1 aluminum toe, composite plate, EH**
- Available in smaller sizes
- **ASTM F3445-21 Slip-Resistant**

839KDB DARK BROWN AT / CP / EH / M
SIZING / 3-12, 13, 14, 15 W MSRP: \$214.99

INTERNAL MET GUARDS



PATTON WELLINGTON INT-MET



WATERPROOF



- Premium, full grain, lightly pebbled, waterproof leather upper with **waterproof Hydroguard® membrane**
- **XRD®** Internal MET guard
- Cemented, shock absorbing, high rebound PU midsole
- High-traction, oil, acid & slip resistant, heavy-duty rubber outsole
- Dual-density high rebound EVA **JETBOUND® FOOTBED™** insole
- **CSA Grade 1 aluminum toe, composite plate, EH**
- **ASTM F3445-21 Slip-Resistant**
- Available in smaller sizes

■ 4TCCBN

BROWN

AT / CP / EH / M

SIZING / 3-12, 13, 14, 15 M/W

MSRP: \$209.99



6" SENTRY 2020 INT-MET



KRYPTOE

- Full-grain waterproof leather upper
- Four-row stitched "combat" upper pattern with comfort bellows tongue
- Abrasion-resistant **TECTUFF™** leather back strap
- Moisture-wicking lining with **CLEANFEET®** odor-control treatment
- **XRD®** Internal MET guard
- All-season, slip-resistant, heavy-duty TPU outsole
- Direct-injected, lightweight and shock-absorbing PU midsole, with PU toe bumper
- Premium comfort **PU FOOTBED™** insole
- **CSA Grade 1 nanocomposite KRYPTOE® safety toe, composite plate, EH.**
- **ASTM F3445-21 Slip-Resistant**

■ 4NRWBK

BLACK

NT / CP / EH / M

■ R4NWBK

BROWN

NT / CP / EH / M

SIZING / 7-12, 13, 14, 15 M/W

MSRP: \$189.99

ATHLETICS & CASUALS

Terra's Athletics & Casuals line is engineered to meet the demands of those who value comfort, agility, and safety. By combining innovative technology with rugged durability, these safety shoes excel in fast-paced and demanding jobsites. With features such as CLEANFEET® odour control, premium comfort FOOTBED™ insoles, and slip-resistant outsoles, Terra's safety shoes provide targeted cushioning and all-day support. From the moment you step into your workday, Terra's Athletics & Casuals offer advanced features that ensure every step is a step forward.

VECTOR

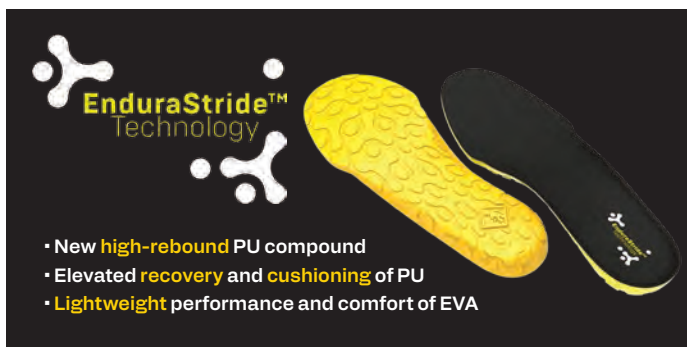


- Breathable performance mesh upper with reinforced toe
- Moisture wicking soft-touch lining
- **EXOLOK™** support lacing technology
- Shock absorbing EVA midsole
- Slip & oil resistant rubber outsole
- Integrated TPU arch support plate
- **EnduraStride™** comfort **PU FOOTBED™** insole
- **CSA Grade 1 composite safety toe, composite plate, SD35**
- **TERRA FIRMA FLEX™** – 100% Metal Free
- **ASTM F3445-21 Slip-Resistant**
- Available in smaller sizes

| | | |
|----------|-------------|----------------|
| ■ 1298BW | BLACK/WHITE | CT / CP / SD35 |
| ■ 1298BK | BLACK | CT / CP / SD35 |

SIZING / 3-12, 13, 14, 15 W

MSRP: \$139.99





ECLIPSE



- Lightweight and breathable single piece knitted upper construction
- Reinforced TPU overlays for added durability in the toe and heel
- Webbed lacing system for customized fit and computer stitched reinforcement
- Lightweight, dual density EVA midsole
- Slip and oil resistant rubber outsole
- **TERRA® OMNICORE™** construction elevates performance and protection with a puncture resistant plate between two layers of high rebound EVA
- **CSA Grade 1 composite toe, composite plate with aesthetically pleasing low profile, SD35**
- **TERRA FIRMA FLEX™** – 100% Metal Free
- **ASTM F3445-21 Slip-Resistant**

| | | |
|---|--------------|----------------|
| ■ 4T8MBR | BLACK/RED | CT / CP / SD35 |
| ■ 4T8NBY | BLACK/YELLOW | CT / CP / EH |

SIZING / 7-12, 13, 14, 15 W

MSRP: \$139.99



VENOM



- Water-resistant suede and nubuck leather upper
- Moisture-wicking and abrasion-resistant lining
- **CLEANFEET®** odor-control treatment
- Reflective toe and heel accents
- Low-profile direct-injected PU midsole and outsole with supportive sidewall chassis
- Premium single-density **PU FOOTBED™** insole
- **CSA Grade 1 composite toe, composite plate, SD**
- **TERRA FIRMA FLEX™** – 100% Metal Free
- **ASTM F3445-21 Slip-Resistant**

VENOM LOW

| | | |
|--|------------------|--------------|
| ■ R8185B | CHARCOAL / BLACK | CT / CP / SD |
|--|------------------|--------------|

SIZING / 6, 7, 8-11, 12, 13 M

MSRP: \$134.99

VENOM MID

| | | |
|--|------------------|--------------|
| ■ R8285B | CHARCOAL / BLACK | CT / CP / SD |
|--|------------------|--------------|

SIZING / 6, 7, 8-11, 12, 13 M

MSRP: \$144.99



COLD CLIMATE COLLECTION

Packed with technologies that lock out the cold, seal in the warmth and grip the ground in the most frigid conditions. Throughout the collection, Thinsulate™ insulation provides a fortress from the chill – down to -60°C/-76°F in select styles. Custom Vibram® outsoles engineered with snow-and ice-gripping tread patterns have been formulated with rubber compounds that stay flexible when the temperature plummets. Removable lining systems, cold-formulated PU shells, and composite safety toes and plates round out the collection – so work gets done, no matter how glacial the conditions get.



8" GANTRY LXI 400g



- Premium waterproof leather with **waterproof Hydroguard®** membrane
- Padded top collar
- Dual-purpose top hardware for quick lacing
- Moisture-wicking lining with **CLEANFEET®** odor-control treatment
- 400 grams of **Thinsulate™** insulation for ultimate warmth
- Molded **TERRA®** TPU toe bumper for increased abrasion resistance
- Rigid external heel counter for improved lateral stability
- **3M™Scotchlite™** reflective detail for high visibility
- Cemented high rebound PU midsole
- **VIBRAM® FIRE & ICE™** outsole for superior traction and performance in high heat & sub-zero temperatures
- Premium comfort PU + eTPU **JETSTRIDE® FOOTBED™** insole
- **CSA Grade 1 nanocomposite KRYPTOE®** safety toe, composite plate, EH
- **ASTM F3445-21 Slip-Resistant**

8398DB

DARK BROWN

NT / CP / EH

SIZING / 7-12, 13, 14, 15, 16 W

MSRP: \$249.99





8" GANTRY LXI 1000g



WATERPROOF



- Premium waterproof leather with **waterproof Hydroguard®** membrane
- Padded top collar
- Dual-purpose top hardware for quick lacing
- Moisture-wicking lining with **CLEANFEET®** odor-control treatment
- 1000 grams of **Thinsulate™** insulation for ultimate warmth
- Molded **TERRA®** TPU toe bumper for increased abrasion resistance
- Rigid external heel counter for improved lateral stability
- **3M™ Scotchlite™** reflective detail for high visibility
- Cemented high rebound PU midsole
- **VIBRAM® FIRE & ICE™** outsole for superior traction and performance in high heat & sub-zero temperatures
- Premium comfort PU + eTPU **JETSTRIDE® FOOTBED™** insole
- **CSA Grade 1 nanocomposite KRYPTOE®** safety toe, **composite plate**, **EH**
- **ASTM F3445-21 Slip-Resistant**

■ **4TAXBK** BLACK NT / CP / EH
SIZING / 7-12, 13, 14, 15, 16 W MSRP: \$259.99



CROSSBOW



- Full-grain waterproof sealed-seam leather upper with integrated pull tab
- Removable **TERRASPHERE™** 4-layer lining system
- **CLEANFEET®** odor-control treatment
- Reflective **3M™ Scotchlite™** quarter band
- High-traction, thermal-tested rubber outsole, with diamond cleat design
- Direct-injected, cold-formulated PU shell bottom with doffing-assist heel prong
- Two layer mesh and EVA moisture capture frost plug insole
- **CSA Grade 1 composite toe, composite plate, EH.**
- **TERRA FIRMA FLEX™** – 100% Metal Free
- Comfort Rated **-60°C/-76°F**
- **ASTM F3445-21 Slip-Resistant**

■ **R5605B** BLACK CT / CP / EH
SIZING / 4-16 M (FULL SIZES ONLY) MSRP: \$259.99

6" SAFETY BOOTS



6" EXILE 25 CT / CP / EH

■ 1009BK BLACK

SIZING / 7-12, 13, 14, 15 W



6" EXILE 25 CT / CP / EH

■ 1009DB DARK BROWN

SIZING / 7-12, 13, 14, 15 W



6" GENTRY NT / CP / EH

■ 4T8VBK BLACK

SIZING / 7-12, 13, 14, 15, 16 M/W



6" IRONSTONE CT / CP / EH

■ 839GBK BLACK

SIZING / 7-12, 13, 14, 15 W



6" IRONSTONE CT / CP / EH

■ 839GDB BROWN

SIZING / 7-12, 13, 14, 15 W



6" CARBINE CT / CP / EH

■ 8395BN BROWN

SIZING / 7-12, 13, 14, 15 M/W



6" CARBINE CT / CP / EH

■ 8395WT WHEAT

SIZING / 7-12, 13, 14, 15 M/W



6" COBALT CT / CP / EH

■ 1279BK BLACK

SIZING / 7-12, 13, 14, 15 W



6" COBALT CT / CP / EH

■ 1279TN TAN

SIZING / 7-12, 13, 14, 15 W



6" SAFETY BOOTS



6" BYRNE CT / CP / EH

■ 839BBK BLACK

SIZING / 3-12, 13, 14 W
(AVAILABLE IN SMALLER SIZES)



6" BYRNE CT / CP / EH

■ 839BDB DARK BROWN

SIZING / 3-12, 13, 14 W
(AVAILABLE IN SMALLER SIZES)



MURPHY CT / CP / EH

■ R4NRDB DARK BROWN

SIZING / 3-12, 13, 14 W
(AVAILABLE IN SMALLER SIZES)



MURPHY CT / CP / EH

■ R4NRBK BLACK

SIZING / 3-12, 13, 14 W
(AVAILABLE IN SMALLER SIZES)



MURPHY SOFT TOE SOFT TOE

■ R4NSBK BLACK

SIZING / 3-12, 13, 14 M/W
(AVAILABLE IN SMALLER SIZES)



6" PATTON AT / CP / EH

■ 4NS6BK BLACK

SIZING / 3-12, 13, 14, 15 M/W
(AVAILABLE IN SMALLER SIZES)



6" PATTON AT / CP / EH

■ 4NS6BN BROWN

SIZING / 3-12, 13, 14, 15 M/W
(AVAILABLE IN SMALLER SIZES)



FINDLAY CT / CP / EH

■ 1318DB DARK BROWN

SIZING / 7, 8-11, 12, 13, 14 W



FINDLAY CT / CP / SD

■ R5205B BLACK

SIZING / 7, 8-11, 12, 13, 14 M



6" SAFETY BOOTS



NEW

WOMEN'S

FINDLAY-WOMEN'S CT / CP / EH

■ 1319DB DARK BROWN

SIZING / 5-10, 11 W



WOMEN'S

FINDLAY-WOMEN'S CT / CP / SD

■ 839LBK BLACK

SIZING / 5-10, 11 M



8" SAFETY BOOTS



NEW

8" EXILE 25 CT / CP / EH

■ 1311DB DARK BROWN

SIZING / 7-12, 13, 14, 15 W



8" GANTRY NT / CP / EH

■ 4NRQBK BLACK

SIZING / 7-12, 13, 14, 15, 16 M/W



8" IRONSTONE CT / CP / EH

■ 839FBK BLACK

SIZING / 7-12, 13, 14, 15 W



8" IRONSTONE CT / CP / EH

■ 839FDB BROWN

SIZING / 7-12, 13, 14, 15 W



8" CARBINE CT / CP / EH

■ 4TCRBN BROWN

SIZING / 7-12, 13, 14, 15 M/W



8" CARBINE CT / CP / EH

■ 4TCRWT WHEAT

SIZING / 7-12, 13, 14, 15 M/W



8" SAFETY BOOTS



8" PATTON AT / CP / EH

■ 4NS5BN BROWN

SIZING / 3-12, 13, 14, 15 M/W
(AVAILABLE IN SMALLER SIZES)



WELLINGTONS



MURPHY WELLINGTON CT / CP / EH

■ 1283DB DARK BROWN

SIZING / 3-12, 13, 14 W
(AVAILABLE IN SMALLER SIZES)



PATTON WELLINGTON AT / CP / EH

■ 4TCBBN BROWN

SIZING / 3-12, 13, 14, 15 M/W
(AVAILABLE IN SMALLER SIZES)



PATTON WELLINGTON AT / CP / EH

■ 4TCBBK BLACK

SIZING / 3-12, 13, 14, 15 M/W
(AVAILABLE IN SMALLER SIZES)



EXTERNAL MET GUARDS



8" PATTON EXT-MET AT / CP / EH / M

■ 1314DB DARK BROWN

SIZING / 3-12, 13, 14, 15 W
(AVAILABLE IN SMALLER SIZES)



6" SENTRY 2020 EXT-MET NT / CP / EH / M

■ 4NRXBK BLACK

SIZING / 7-12, 13, 14, 15 M/W



6" SENTRY 2020 EXT-MET NT / CP / EH / M

■ 4NRXBN BROWN

SIZING / 7-12, 13, 14, 15 M/W



INTERNAL MET GUARDS



8" GANTRY INT-MET NT/CP/EH/M

■ 839CBK BLACK

SIZING / 7-12, 13, 14, 15, 16 W



8" PATTON INT-MET AT/CP/EH/M

■ 839KDB DARK BROWN

SIZING / 3-12, 13, 14, 15 W
(AVAILABLE IN SMALLER SIZES)



PATTON WELLINGTON INT-MET AT/CP/EH/M

■ 4TCCBN BROWN

SIZING / 3-12, 13, 14, 15 M/W
(AVAILABLE IN SMALLER SIZES)



6" SENTRY 2020 INT-MET NT/CP/EH/M

■ 4NRWBK BLACK

SIZING / 7-12, 13, 14, 15 M/W



6" SENTRY 2020 INT-MET NT/CP/EH/M

■ R4NWBN BROWN

SIZING / 7-12, 13, 14, 15 M/W



ATHLETICS & CASUALS



VECTOR CT/CP/SD35

■ 1298BK BLACK

SIZING / 3-12, 13, 14, 15 W
(AVAILABLE IN SMALLER SIZES)



VECTOR CT/CP/SD35

■ 1298BW BLACK/WHITE

SIZING / 3-12, 13, 14, 15 W
(AVAILABLE IN SMALLER SIZES)



ECLIPSE CT/CP/SD35

■ 4T8MBR BLACK/RED

SIZING / 7-12, 13, 14, 15 W



ATHLETICS & CASUALS



ECLIPSE CT / CP / EH

■ **4T8NBY** BLACK/YELLOW

SIZING / 7-12, 13, 14, 15 W



VENOM LOW CT / CP / SD

■ **R8185B** CHARCOAL/BLACK

SIZING / 7, 8-11, 12, 13 M



VENOM MID CT / CP / SD

■ **R8285B** CHARCOAL/BLACK

SIZING / 6, 7, 8-11, 12, 13 M



COLD CLIMATE



8" GANTRY LXI 400g NT / CP / EH

■ **8398DB** DARK BROWN

SIZING / 7-12, 13, 14, 15, 16 W



8" GANTRY LXI 1000g NT / CP / EH

■ **4TAXBK** BLACK

SIZING / 7-12, 13, 14, 15, 16 W



CROSSBOW CT / CP / EH

■ **R5605B** BLACK

SIZING / 4-16 M (FULL SIZES ONLY)



TECHNOLOGIES

| | | | |
|-----------|-----------------|-------------|------------------------------|
| AT | Alloy Toe | EH | Electrical Hazard Resistance |
| NT | Nano Toe | SD | Static Dissipative |
| CT | Composite Toe | SD35 | Super-Static Dissipative |
| CP | Composite Plate | M | Metatarsal Protection |
| SF | Soft Toe | | |
| SP | Steel Plate | | |



ALLOY TOE

Aluminum protective toe cap meets the CSA Z195-14 Grade 1 and ASTM 2413 I/75 and C/75 impact and compression standards.



NANO TOE

The latest generation of composite safety technology, carbon nanotubes are combined with fiberglass resin to create one of the strongest and lightest safety toes on the market. Our nano toes are dual ASTM F2413 and CSA Z195 certified.



COMPOSITE SAFETY TOE

Non-metallic toe cap meets CSA Z195-14 Grade 1 and ASTM F2413, I/75 and C/75 impact and compression safety standards.



PUNCTURE RESISTANT

Meets ASTM F2413 and CSA Z195-14 puncture resistant standards with protective soles.



ELECTRICAL HAZARD PROTECTION

Meets CSA Z195-14 electric shock resistance. Sole provides resistance to electric shock, intended to withstand 18,000 V and leakage current not exceeding 1 mA.



STATIC DISSIPATIVE

Meets CSA standards for SD. Each test specimen shall fall within a range of 10^6 to 10^8 Ohms.



SUPER-STATIC DISSIPATIVE

Styles marked with the SD+/SD35 icon are super static-dissipative. The testing tolerance is lower than standard SD, making these ideal for industries where static discharge is a critical hazard.



SLIP RESISTANT

Outsole has been tested in accordance to CSA Z195 Slip Resistant standard.



METAL FREE

All safety components, hardware and materials are non-metallic, and meet or exceed the applicable safety standards and performance specifications required.



EXTERNAL METGUARD

External met guards are affixed on the outside of the footwear, and offer additional metatarsal protection against impacts beyond the toe cap.



INTERNAL METGUARD

An internal met guard offers enhanced protection for the small metatarsal bones of the feet. Affixed between the inner lining, and the outer leather – this component extends from the top edge of the toecap up towards the tongue of the boot for a seamless protective barrier.



WATERPROOF MEMBRANE

Full-booty construction and welded insulation offer complete around-the-foot waterproofing protection.



LIGHTWEIGHT

Our Lightweight models feature engineered materials and components that provide maximum comfort and agility while minimizing the overall weight of the footwear.



ASTM

Styles with designated ASTM logo are tested in accordance with F2413-18 standard. This specification covers the minimum design, performance, testing, and classification requirements, and prescribes fit, function, and performance criteria for footwear designed to be worn to provide protection against a variety of workplace hazards that can potentially result in injury.



CSA GREEN TRIANGLE

The CSA Green Triangle indicates sole puncture protection with a Grade 1 Protective toe to withstand impacts up to 125 joules. Sole puncture protection is designed to withstand a force of not less than 1200 Newtons (122 kilos / 270 pounds).



CSA WHITE RECTANGLE

The CSA White rectangle with orange Greek letter omega indicates soles that provide resistance to electric shock. Such certified footwear contains a sole and heel design assembly that, at the point of manufacturing, has electrical insulating properties to withstand 18,000 Volts and a leakage current not exceeding 1mA for 60 seconds.



CSA YELLOW RECTANGLE

The CSA Yellow rectangle with a green "SD" and grounding symbol indicates soles are static-dissipative. The outer soles are made from an anti-static compound, capable of dissipating an electrostatic charge in a controlled manner. The test criteria are 10^6 to 10^8 Ohms. Note that SD footwear without toe protection will not have sole protection certified by CSA.



CSA SD+

The CSA Yellow rectangle with a black "SD+" indicates soles are super static-dissipative. This protection feature is similar to SD, except the test criteria are 10^6 to 3.5×10^7 Ohms.



METGUARD IMPACT TEST

A new standard from CSA – only metguards bearing the "M" emblem are CSA approved. The mass (22.7kg) is dropped on the centered boot, impacting the metguard.



JETBOUND®

The new Terra® JETBOUND® insole delivers instant comfort. Ultra-soft, high-rebound EVA pressure pods absorb strike forces while the anatomically contoured shape provides underfoot support. A strong, stable EVA chassis helps lock the foot in place to deliver unmatched comfort, support and dynamic elasticity at work.



JETSTRIDE®

Delivers advanced rebound technology in a lightweight, durable design. Pressure pods, engineered for extra bounce, are molded in high-impact strike zones for on-target cushioning.



KRYPTOE®

20% lighter than previous generations, KRYPTOE® technology incorporates specially woven fibres with highly impact-resistant resins. The result is a globally certified, lightweight, low-profile composite toe.



OMNICORE™

OmniCore™ construction includes traditional safety features but rather than coring the top of the midsole directly under the footbed to create a space for the protective plate, we've cored out space underneath the midsole. High-rebound compounds on top of the plate deliver on your feet staying power, while the more rigid compounds beneath the protective plate enhance traction and increase durability.



EXOLOK™

Terra® EXOLOK™ system maximizes heel lock with a molded TPU form that extends to the eyestay, strategically positioning quadrants to enhance support, flexibility, and comfort.



ENDURASTRIDE™

The new EnduraStride™ insole is built with a premium lightweight, high-rebound PU compound, delivering comfort and support, without compromising mobility. Designed specifically to withstand the demands of industrial work environments, EnduraStride™ keeps you light on your feet, allowing you to tackle any task with ease and confidence.



ORTHOLITE® COMFORT FOAM

OrthoLite® comfort foam insole provides odour-fighting anti-microbial function, moisture management, and long-term cushioning.



TECTUFF™

TECTUFF™ PU coated leathers use a proprietary process and chemistry which delivers extreme durability. The polyurethane formula is securely bonded through heat and pressure to the leather substrate. The resulting finish is the most durable in the industry and is impervious to dirt, oil, and stain penetration.



3M™ THINSULATE™

3M™ Thinsulate™ Insulation offers almost one-and-one-half times the warmth of down, and up to twice the warmth of other high-loft insulation materials. Unique microfibers work by trapping air between you and the outside. The more air a material traps in a given space, the better it helps regulate the inside temperature of the footwear.



3M™ SCOTCHLITE™

3M is a pioneer in developing the science behind retro-reflection and has been advancing the technology for over 70 years. 3M™ Scotchlite™ brand is one of the most trusted names in reflective materials and fabrics.



XRD® INTERNAL METGUARD

New breakthrough flexible materials with XRD® technology. Designed to stay flexible in motion, but turn into an ultra-dense protective barrier upon impact.



VIBRAM® FIRE & ICE™

Vibram® FIRE & ICE™ outsole provides superior traction and performance in high heat & sub-zero temperatures.

DWR

Durable Water Repellent, or DWR, is a coating added to fabrics at the factory to make them water-resistant (hydrophobic).

rPET

Recycled polyethylene terephthalate, or recycled PET is a polymer used to widely manufacture products such as insulation and fabric, as well as certain forms of polyester. It possesses the same properties as PET, but is produced with varying degrees of recycled content – without compromising durability or performance.

eTPU

Expanded Thermoplastic Polyurethane (eTPU) is known for its high tensile strength and impact resistance. One of the main features of eTPU is its superior recovery ability, which is due in part to the closed-cell structure. This makes it extremely elastic; an excellent characteristic for long-lasting comfort and resilience.





Warranty Policy

Terra provides a 6 month warranty against defects in materials and workmanship applicable from the date of purchase. Proof of purchase is required in order to exercise the warranty. If Terra determines after inspecting the product that a defect has occurred as a result of normal use, Terra will repair or replace the defective footwear. Any wear deemed as abusive, excessive or inappropriate may void the warranty. All unworn footwear is subject to the same warranty standards (6 months) as some materials used in the manufacturing of this product may deteriorate over time regardless of wear.

TERRA FOOTWEAR, A BRAND OF WORKWEAR OUTFITTERS, LLC

USA

545 Marriott Drive, Suite 100, Nashville TN 37214

P: 1-833-795-3420

E: customerservice@wwof.com

TERRA®, CLEANFEET®, the CLEANFEET® logo, EXOLOK™, the EXOLOK™ logo, EnduraStride™, the EnduraStride™ logo, FOOTBED™, TERRA FIRMA-FLEX™, JETSTRIDE®, the JETSTRIDE® logo, JETBOUND®, the JETBOUND® logo, KRYPTOE®, the KRYPTOE® logo, OMNICORE™, the OMNICORE™ logo, TERRA LITES®, and the WORKMAN DESIGN® are trademarks of IW Apparel, LLC. © 2024 IW Apparel, LLC. All other trademarks or logos are property of their respective owners. Specifications correct at time of printing and are subject to change without notice. 10-30-2024

[TERRAFOOTWEAR.COM](https://terrafootwear.com)



@terra_footwear



@terraboots



@terrafootwear